



Jan De Vos
082 461 3944
j.devos@pdlprop.co.za

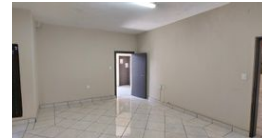
Contact Head Office

013 752 7333

1st Floor, Midcity Building, 37 Brown Street,
Nelspruit, 1201



Web Ref CL564



R9,872 pm

Gross Monthly Rental R9,872 Excl. VAT

0 0

Office in Central Park complex

Upmarket industrial complex with offices to let in Nelspruit

R 9 872 p/m
Pricing excludes VAT and consumption

Size approx. 101m²
Kitchenette
Bathroom
24 hr Security

Various letting options available office and warehouse space for 99 sqm in size to 218 sqm.

Situated in Central Park Industrial complex in Nelspruit's Eastern Industrial area near the R40 with good road links and accessibility. This upmarket industrial complex is well appointed with a relaxed working atmosphere and 24hr security.

To view this or other similar properties, please contact Jan de Vos at PDL Property Management your trusted leasing and investment sales specialist. Alternatively send an email and we will contact you.

Features

Zoning Commercial

Interior

Power 3 Phase Yes
Power Amps 30

Sizes

Floor Size 101m²

Extras

Security

